

# the gatehouse

WESTWAY ■ PORTERFIELD ROAD ■ PA4 8DJ

CANMOOR

NEWLY  
REFURBISHED  
OFFICE SUITES



## Self-contained Office Suites and Business Centre Units 77 sq ft - 2,600 sq ft **TO LET**

- Five minutes from Glasgow Airport
- Second month free for licences of 12 months or more
- 24 hour access – on site management team
- Affordable office space on all inclusive terms
- Generous car parking
- Flexible lease terms
- Exceptional value for money
- Secure business environment
- Available furnished or unfurnished
- Renfrew's premier Business Centre

# RENFREW

[westway-park.com](http://westway-park.com)

# the gatehouse

WESTWAY ■ PORTERFIELD ROAD ■ PA4 8DJ



## DESCRIPTION

The Gatehouse provides high quality office accommodation benefiting from a significant refurbishment. The suites offer a variety of accommodation to satisfy a wide range of business needs from one person rooms to requirements up to 4,000 sq ft.



RECENTLY  
REFURBISHED



FLEXIBLE FLOOR  
AREAS AVAILABLE



GENEROUS  
CAR PARKING



DOUBLE  
GLAZING



MEETING AND  
CONFERENCE ROOMS  
FOR HIRE



24 HR  
SECURITY



FREE  
WIFI



FURNISHED  
OFFICES

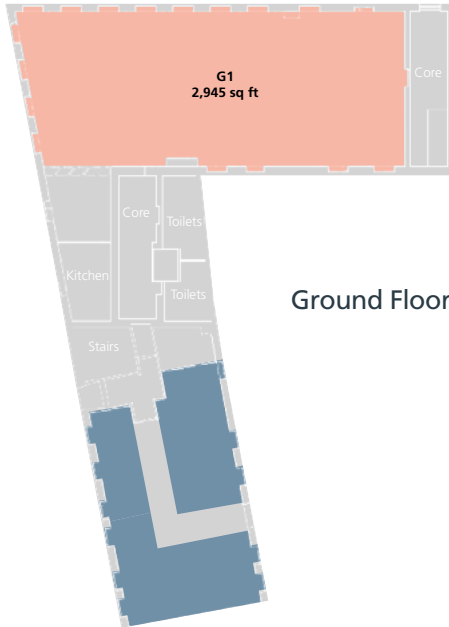
## ACCOMMODATION

The Gatehouse offers a wide range of office accommodation which will suit all kinds of business requirements. All of the business spaces at The Gatehouse are unique, ranging from small open plan offices to larger self-contained suites, all of which enjoy access to kitchen facilities. A viewing of the Gatehouse is recommended in order to fully appreciate the office accommodation on site.

The Business Centre suites are located on the first floor and are available under licence on all-inclusive terms for a minimum period of six months. Larger, self-contained office suites are offered under FRI leases for a minimum three year term at exclusive rents.

The majority of suites will qualify for 100% relief under the Scottish Government Small Business Bonus Scheme.

# RENEW



Ground Floor



First Floor

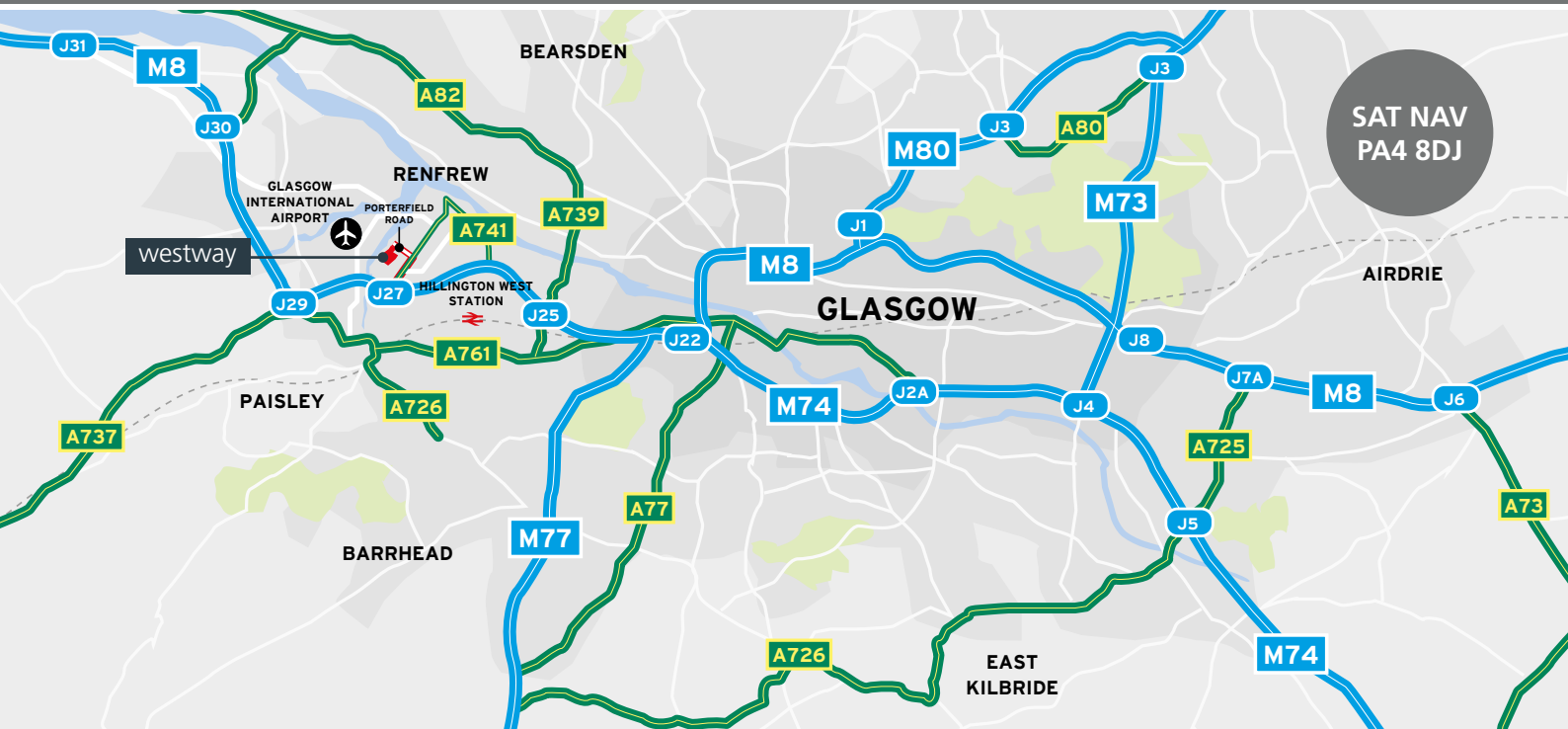


Second Floor

Suite	Availability	Area (sq ft)
Ground Floor Front	NOW	2,600
Dewar Suite	NOW	77
Logie Baird Suite	NOW	175
McAdam Suite	NOW	384
Manson Suite	NOW	220
Somerville Suite	NOW	1,485
2nd Floor Front	Q3 25	2,311
2nd Floor Rear	Q3 25	1,485

Licence Fees/terms for available suites on application from the joint letting agents.





## LOCATION

Westway, in Renfrew, comprises a 130 acre self-contained site providing a mixture of office and industrial properties within a well maintained, fully secure estate.

Westway lies approximately 10 miles west of Glasgow City Centre and 2 miles east of Glasgow International Airport. Access to the site is gained via Junction 27 (a four way junction) of the M8 motorway. The main entrance is situated on Porterfield Road just off the A741 which is the main arterial route into Renfrew from the M8.

Major occupiers of the site include Doosan Babcock, AMG Group, Kintetsu World Express and Star Refrigeration.

## COMMUNICATIONS

J27 - M8	1.2 miles
J26 - M8	2.3 miles
Glasgow Airport	2.3 miles
Paisley Town Centre	3 miles
Hillington West Station	3 miles
Glasgow City Centre	7 miles
Prestwick International Airport	42 miles

## EPC

The Gatehouse - EPC Rating B30.

## VAT

All figures quoted are exclusive of VAT.

## VIEWING

Strictly through our joint agents:

For further information please contact our joint agents:



**Hanna McKie**  
07933 514 376  
hanna.mckie@jll.com



**Edin Lynch**  
07583 132 720  
edin.lynch@knightfrank.com