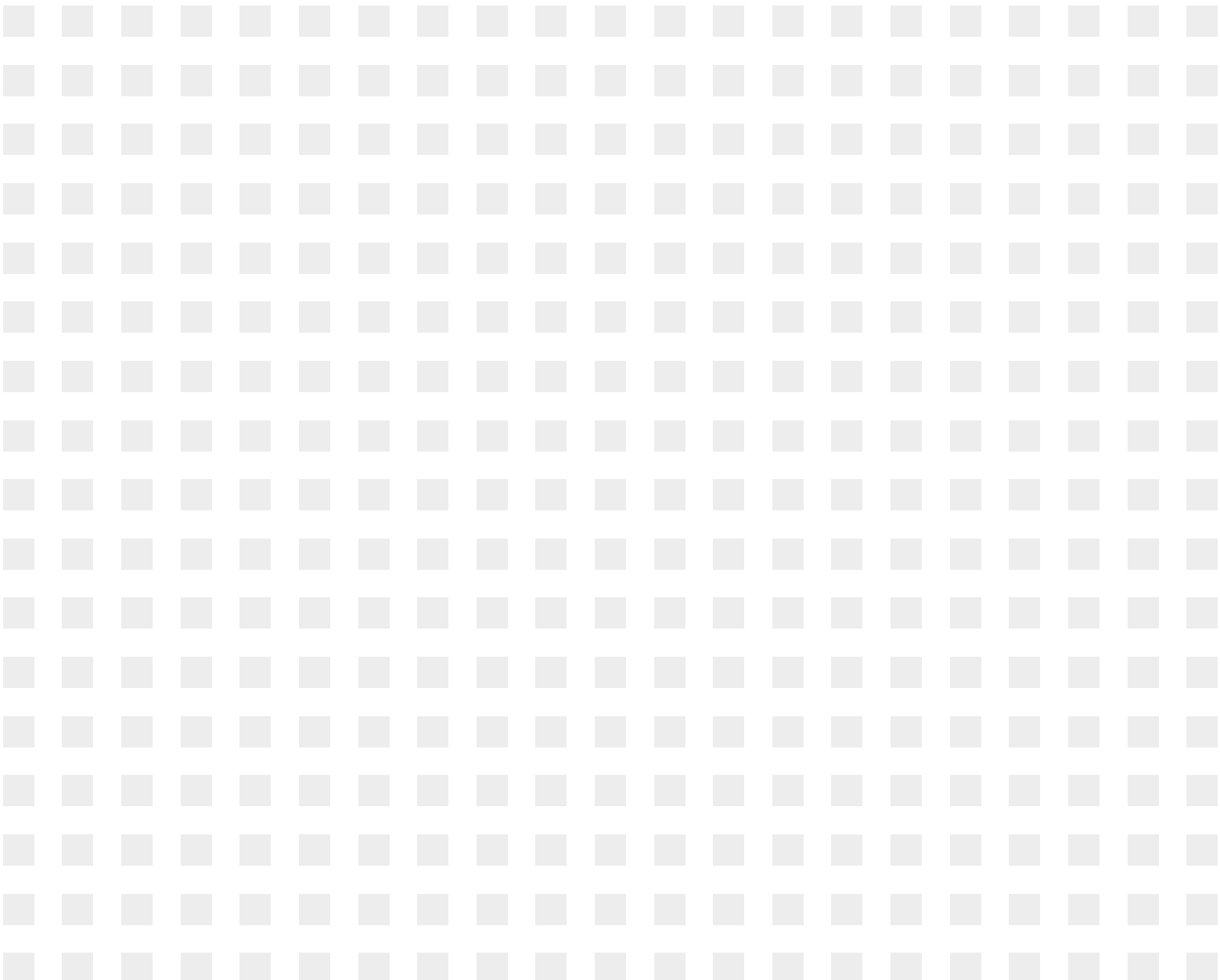


TWENTY
CHAPEL STREET • LIVERPOOL



THE STAND OUT BUILDING IN LIVERPOOL

The Grade A office building comprising of 155,000 sq ft with an established occupier mix including Ernst & Young, Orega, Police Mutual, Mason Owen, Barclays and Liverpool Football Club. The contemporary design and large areas of uninterrupted glazing offer stunning views of the River Mersey and Liverpool's distinctive skyline.





OUR VISION

The comprehensively redesigned reception featuring a brand new café facility, provides a breakout area for tenants to meet informally during a busy day. We believe this modern co-working space matches the needs of our tenants in an ever-changing environment.



YOUR SPACE

With an EPC rating D, Twenty Chapel Street provides Grade A office space with spectacular views of The River Mersey. The large floor plates offer a flexible and efficient working environment and recent refurbishment to the common areas has further increased the quality offering.

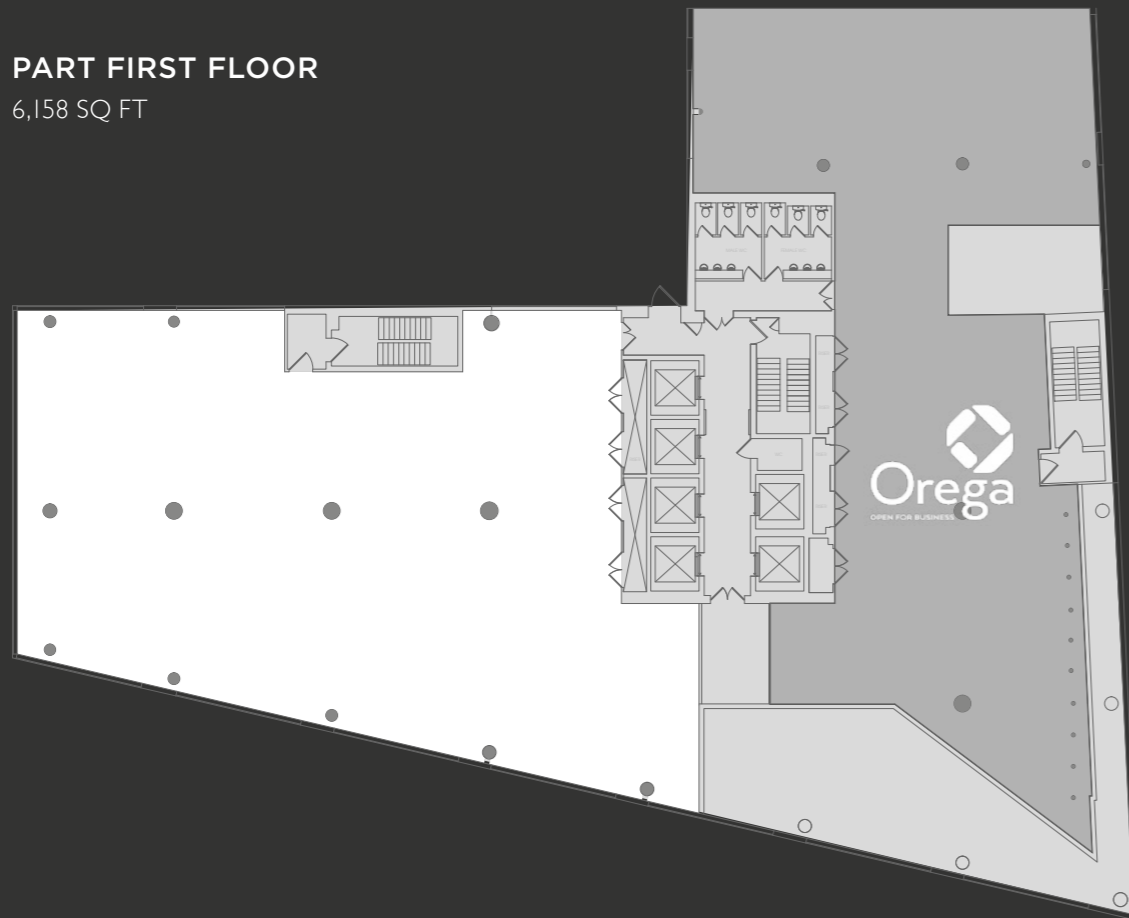
Twenty Chapel Street is an M247 UK enabled building providing super high-speed broadband services. Our delivery of high-speed, always-on, uncontested connectivity (10Mbps - 2Gbps) allows tenants to scale their internet and phone requirements according to their specific needs.

FLOOR PLATES

PART SIXTH FLOOR
7,294 SQ FT



PART FIRST FLOOR
6,158 SQ FT



Floor	Tenant / Availability	sq ft	sq m
Fifteenth	Ernst & Young		
Fourteenth	RSM		
Thirteenth	The Lead Agency		
Twelfth	CEL Solicitors		
Eleventh	Barclays (Wealth & Corporate)		
Tenth	Liverpool Football Club		
Ninth	Liverpool Football Club		
Eighth	Liverpool Football Club		
Seventh (part)	Mason Owen Financial Services		
Seventh (part)	Mason Owen Property		
Sixth (part)	TO LET	7,294	677.6
Sixth (part)	BCD Travel		
Fifth	Police Mutual		
Fourth	Park Group		
Third	Park Group		
Second	Orega Business Centre		
First (part)	Orega Business Centre Reception		
First (part)	TO LET	6,158	572.1
Ground (part) Retail	Nisbets		
Ground (part) Retail	Bean Coffee		

IN GOOD COMPANY



LOCAL STATS



250,000

6 universities,
58,000 students with
30,000 graduates each year

250,000 students in a 30 mile
radius creates an attractive
pool of future talent

6 MILLION

6 million workforce within
one hours drive



80+ high profile businesses
have a customer services
centre in Liverpool



15,500

Wages in Liverpool are
10% lower than the national
average

15,500 people employed
in leading back office and
service centres

SPACE PLAN

6TH FLOOR | 7,294 SQ FT

- 54 work stations
- Tea room & cafeteria
- 4 x print areas
- 1 x 6 person meeting room
- 1 x 8 person meeting room
- 1x 12 person meeting room



- 4 pipe fan coiled air conditioning system
- Perforated steel suspended ceiling with LG7 lighting
- Steel encapsulated raised floors

- Super fast broadband (IGB of connectivity available)
- Stunning river views

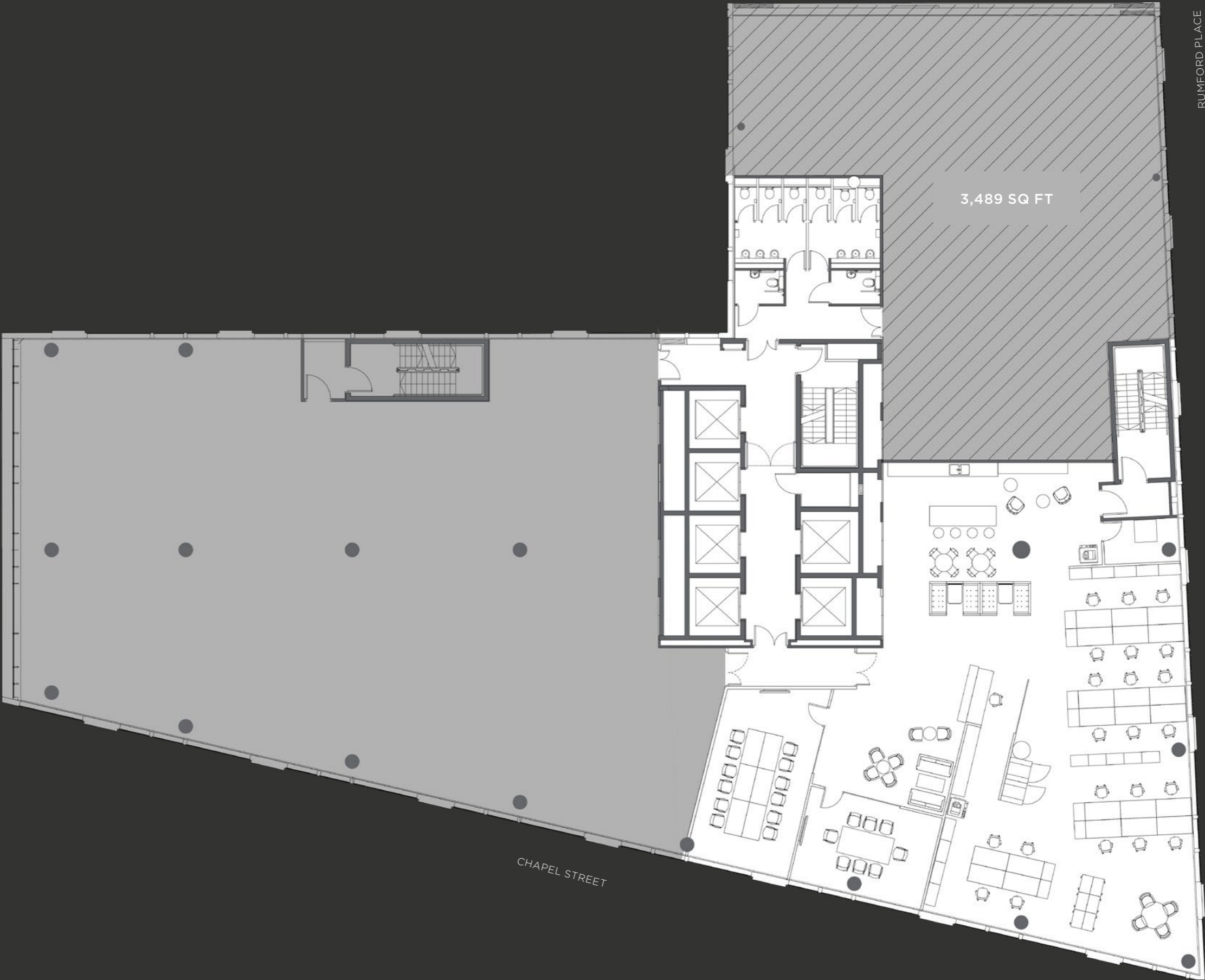
- 6 x 12 person high speed passenger lifts
- Remodelled double height reception with new integrated coffee facility
- Basement car parking

- Shower and changing facilities
- EPC rating D

SPACE PLAN

6TH FLOOR | 3,805 SQ FT

- 22 work stations
- Tea room & cafeteria
- 2 x print areas
- 1 x 8 person meeting room
- 1 x 12 person meeting room

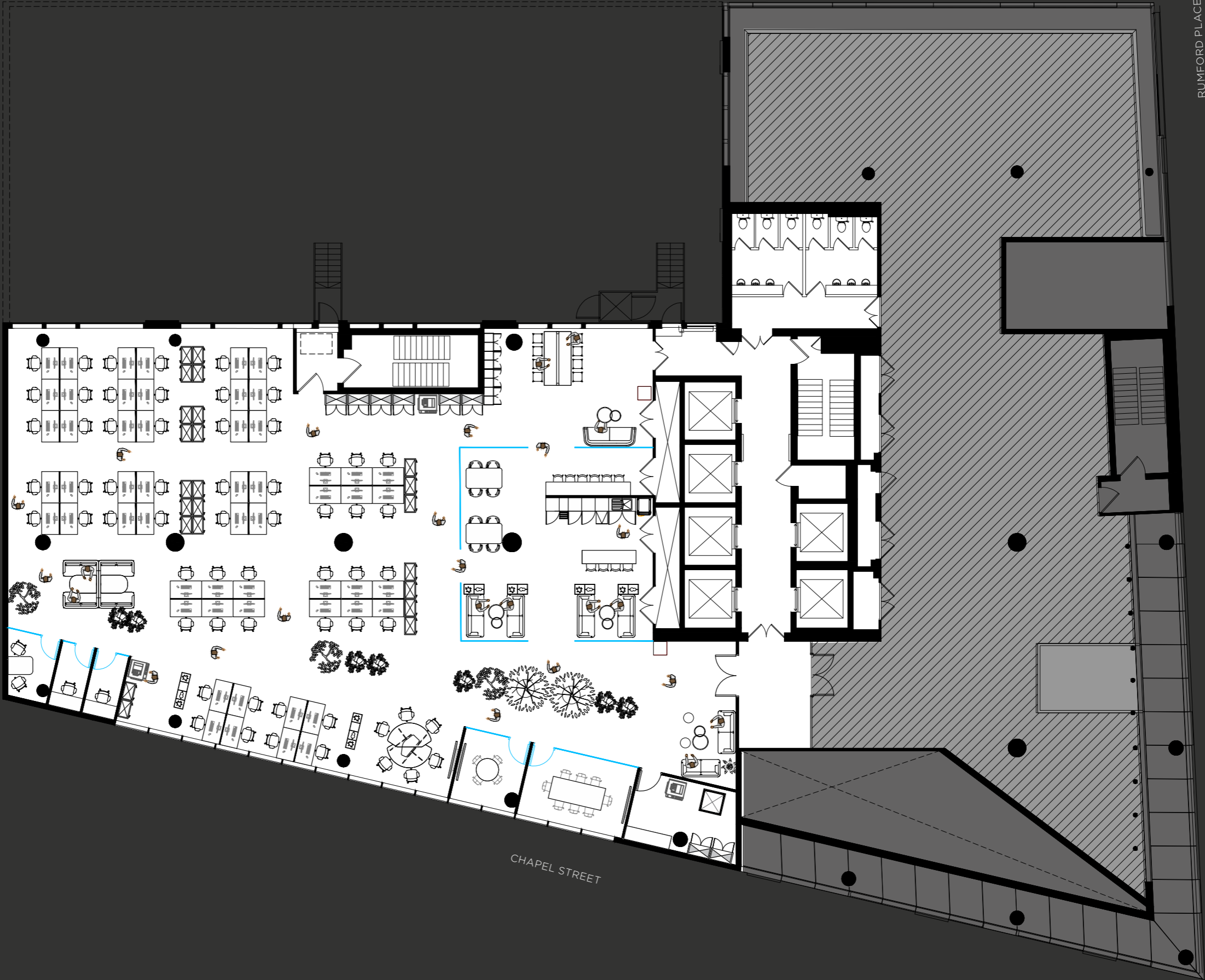


- | | | | |
|--|--|--|----------------------------------|
| • 4 pipe fan coiled air conditioning system | • Super fast broadband (IGB of connectivity available) | • 6 x 12 person high speed passenger lifts | • Shower and changing facilities |
| • Perforated steel suspended ceiling with LG7 lighting | • Stunning river views | • Remodelled double height reception with new integrated coffee facility | • EPC rating D |
| • Steel encapsulated raised floors | | • Basement car parking | |

SPACE PLAN

PART 1ST FLOOR | 6,158 SQ FT

- 56 work stations
- Tea room & cafeteria
- 3 x print areas
- 1 x 4 person meeting room
- 1 x 8 person meeting room



- 4 pipe fan coiled air conditioning system
- Perforated steel suspended ceiling with LG7 lighting
- Steel encapsulated raised floors
- Super fast broadband (IGB of connectivity available)
- Stunning river views
- 6 x 12 person high speed passenger lifts
- Remodelled double height reception with new integrated coffee facility
- Basement car parking
- Shower and changing facilities
- EPC rating D



A SHORT WALK

Liverpool has a wide range of amenities and leisure facilities a short walk from Twenty Chapel Street. The nearest car park, Rumford Street, is just across the road and the impressive array of shops, bars and restaurants cater for all occasions as the lively business district continues to grow.



TRAVEL

1. Liverpool Pier Head Ferry Terminal
2. Cruise Liner Terminal
3. James Street Rail Station
4. Moorfields Rail Station



HOTELS

5. Mercure Hotel
6. Crowne Plaza Hotel
7. Malmaison Hotel
8. Travelodge
9. Radisson Blu Hotel



RESTAURANTS

10. Restaurant Bar & Grill
11. Fazenda Rodizio Grill
12. Gino D'Acampo
13. San Carlo
14. Marco Pierre White



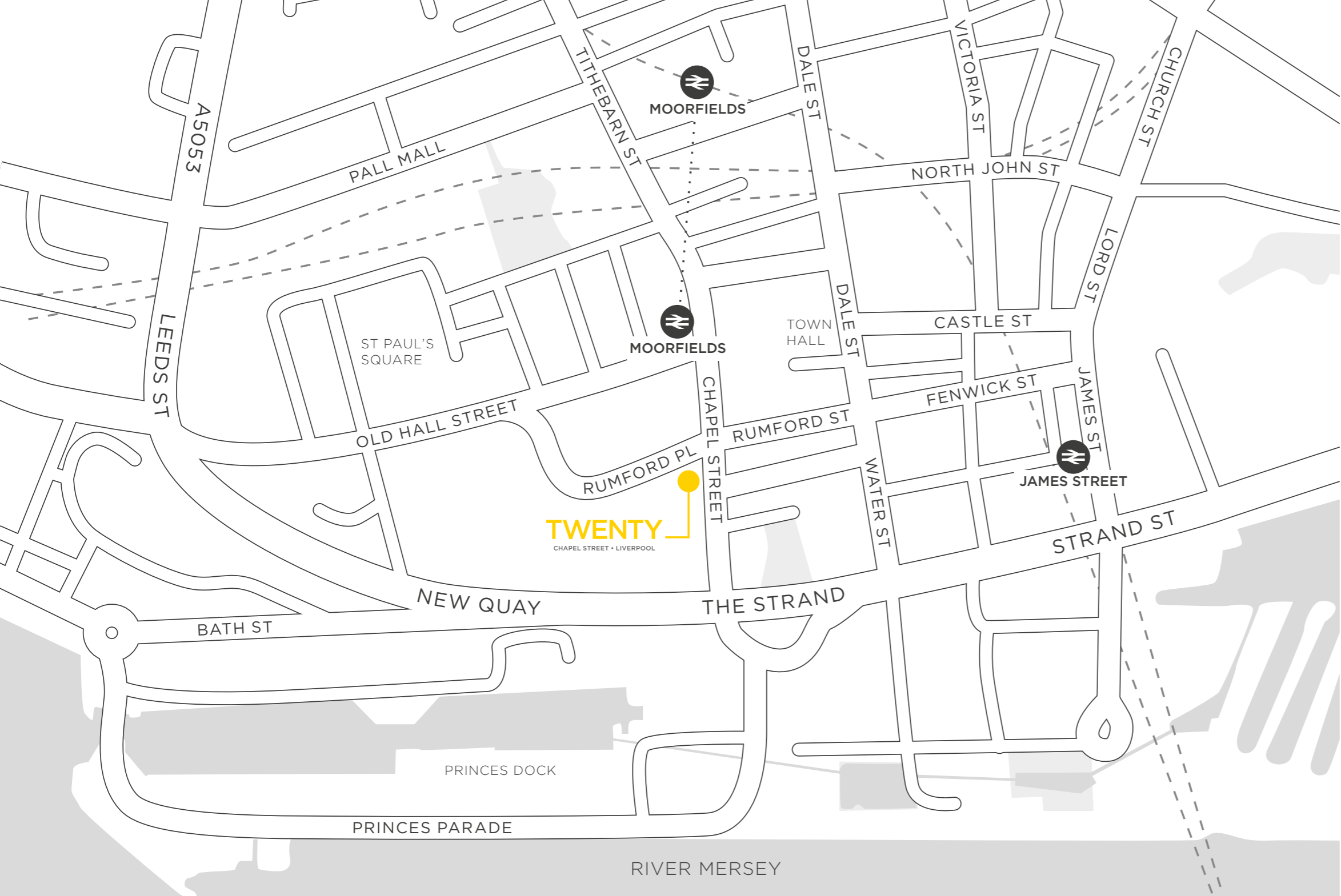
BARS & CAFÉS

15. Costa
16. Starbucks
17. Pret A Manger
18. Philpotts
19. El Gato Negro



LEISURE

20. Museum of Liverpool
21. Debenhams
22. JD Gym



TRAVEL TIMES

SAT NAV: L3 9AG



Chapel Street is an arterial route from The Strand and Pier Head through the Commercial District. It provides direct access to both Queensway and Kingsway Mersey Tunnels and Liverpool Lime Street mainline station.

Motorway	Drive Time
M53 J1	14 mins
M62 J4	21 mins
M57 J1	24 mins
M58 J1	27 mins
M6 J21A	35 mins

Road	Drive Time
Chester	40 mins
Southport	43 mins
Manchester	1 hr 1 min
Leeds	1 hr 32 mins
London	4 hrs 14 mins

Station	Travel Time
Manchester	35 mins
Chester	45 mins
Southport	45 mins
Leeds	1 hr 45 mins
London Euston	2 hrs

WWW.TWENTYCHAPELSTREET.CO.UK

FURTHER INFORMATION

For further information or to arrange a viewing please contact the sole leasing agents



Andrew Owen

T 0151 230 1130 **M** 07798 576 789
andrew@worthingtonowen.com

Mark Worthington

T 0151 230 1130 **M** 07713 884 784
mark@worthingtonowen.com



Neil Kirkham

T 0151 471 4933 **M** 07584 300 859
neil.kirkham@cbre.com

Andrew Byrne

T 0151 471 4915 **M** 07823 520 540
andrew.byrne@cbre.com