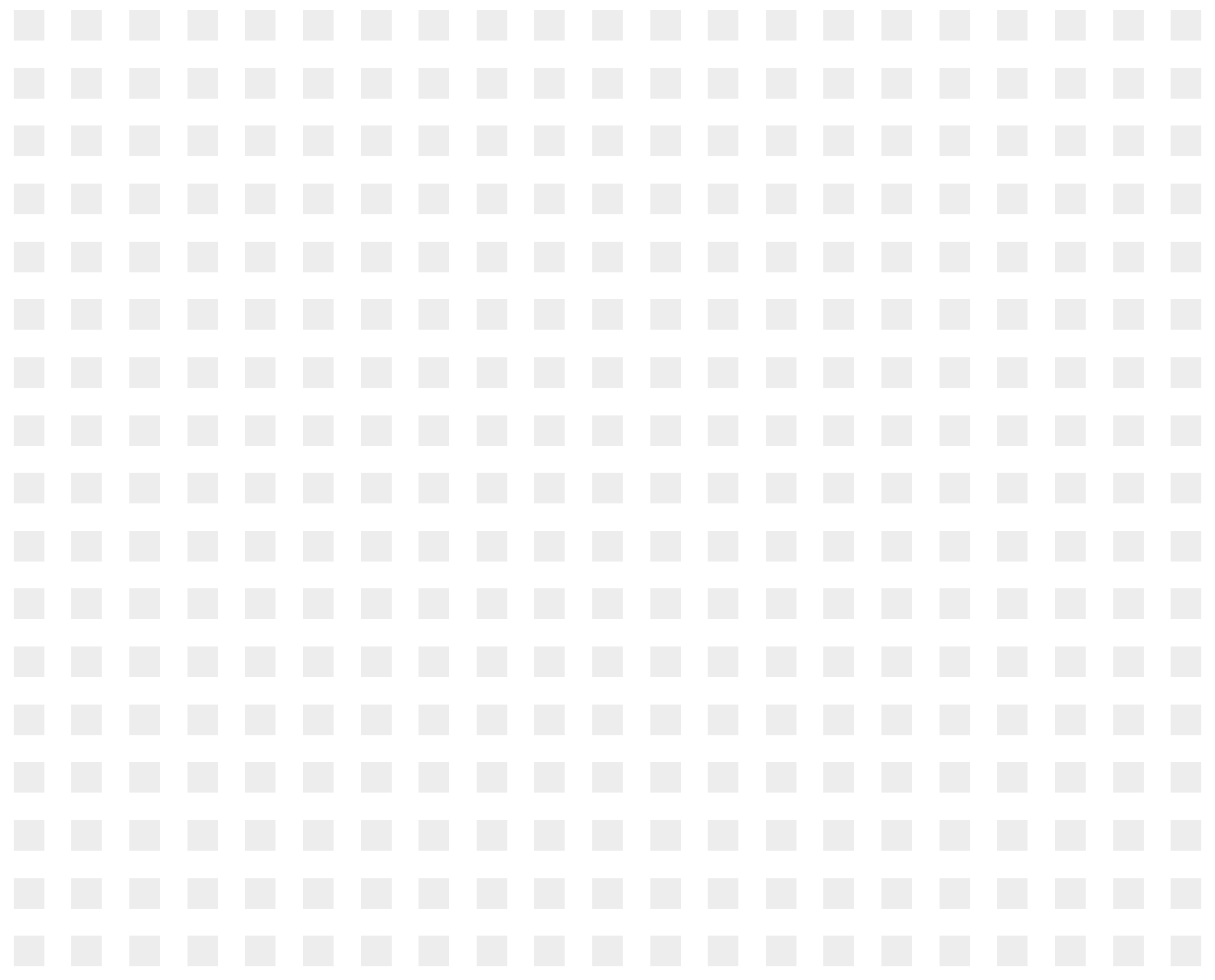


TWENTY

CHAPEL STREET • LIVERPOOL



THE STAND OUT BUILDING IN LIVERPOOL



The Grade A office building comprising of 155,000 sq ft with an established occupier mix including Ernst & Young, Fujitsu, Barclays and Liverpool Football Club. The contemporary design and large areas of uninterrupted glazing offer stunning views of the River Mersey and Liverpool's distinctive skyline.



OUR VISION

Plans for a comprehensively redesigned reception with café facility are underway. The enlarged space will provide a breakout area for tenants to meet informally during a busy day. We believe this modern co-working space will match the needs of our tenants in an ever changing environment.

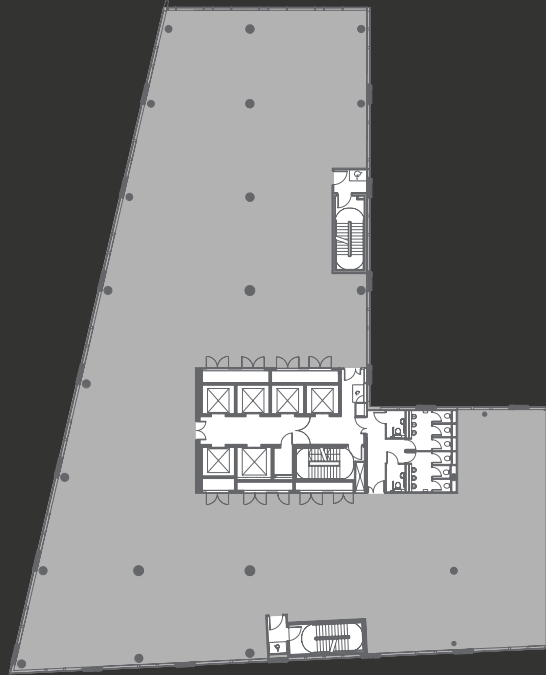




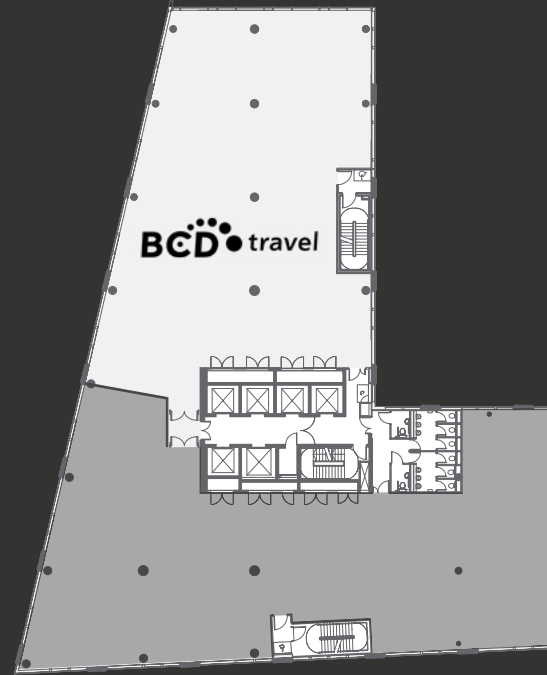
YOUR SPACE

With an EPC rating B, 20 Chapel Street provides Grade A office space with spectacular views of The River Mersey. The large floor plates offer a flexible and efficient working environment, with further refurbishment planned to common areas which will increase the quality offering.

20 Chapel Street is a Metronet UK enabled building providing super high-speed broadband services. Our delivery of high-speed, always-on, uncontested connectivity (10Mbps - 2Gbps) allows tenants to scale their internet and phone requirements according to their specific needs.



THIRD FLOOR
12,976 SQ FT



PART SIXTH FLOOR
7,294 SQ FT



PART TWELFTH FLOOR
4,100 SQ FT

**FLOOR
PLATES**

Floor	Tenant / Availability	sq ft	sq m
Fifteenth	Ernst & Young		
Fourteenth	RSM		
Thirteenth	The Lead Agency		
Twelfth (part)	Broadway Malyan		
Twelfth (part)	TO LET	4,100	380.8
Eleventh	Barclays (Wealth & Corporate)		
Tenth	Liverpool Football Club		
Ninth	Liverpool Football Club		
Eighth	Liverpool Football Club		
Seventh	Fujitsu		
Seventh (part)	Under Offer		
Sixth (part)	TO LET	7,294	677.6
Sixth (part)	BCD Travel		
Fifth	Police Mutual		
Fourth	Under Offer		
Third	TO LET	12,976	1,205.5
Second	Orega - Fitting Out		
First (part)	Orega - Fitting Out		
First (part)	CS Financial		
Ground	Nisbets		

IN GOOD COMPANY



CELLULAR SPACE PLAN

3RD FLOOR | 12,976 SQ FT

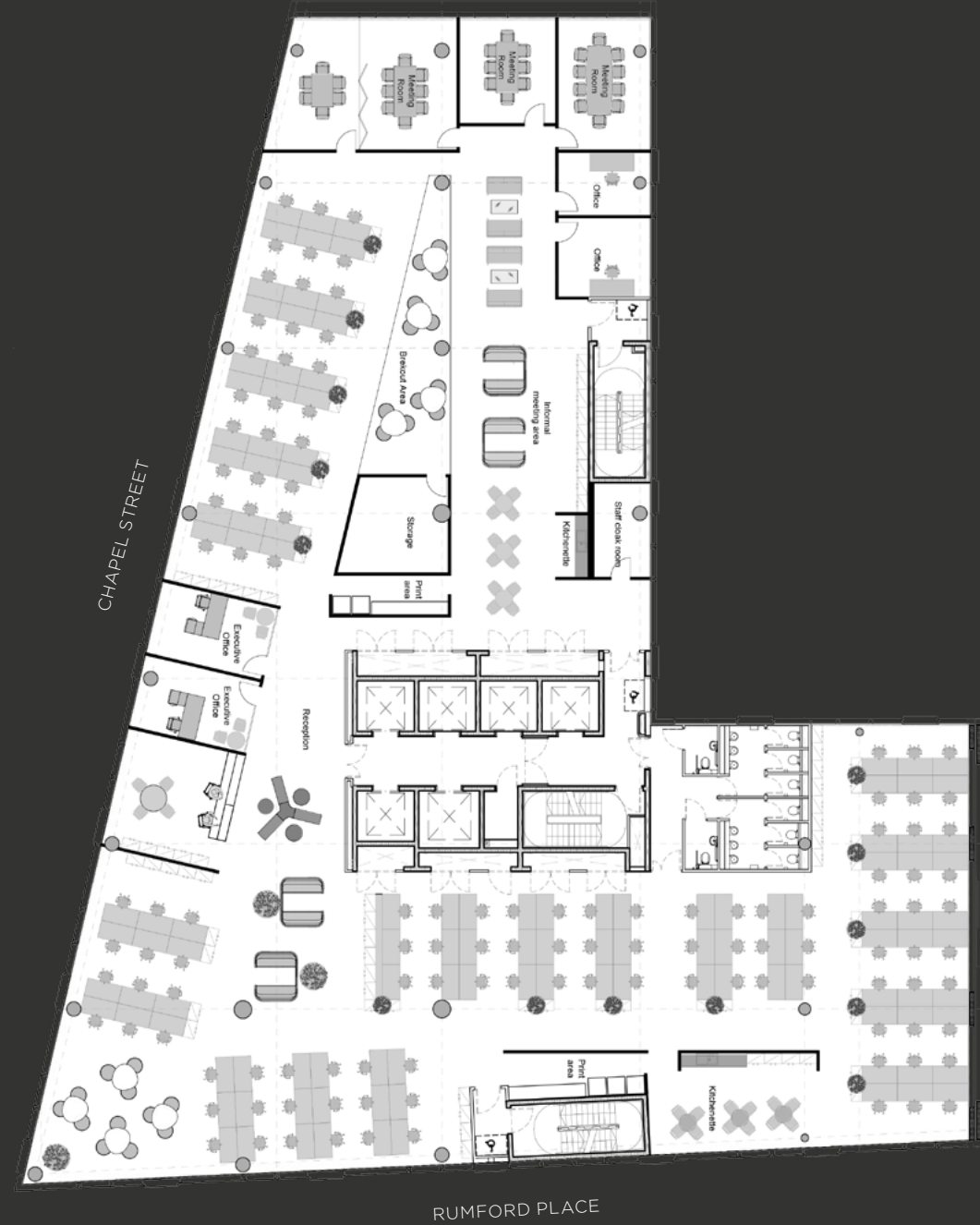
- 64 work stations
- 1 x 14 person meeting room
- Tea room & cafeteria
- 1 x 8 person meeting room
- 2 x print areas
- 2 x 10 person meeting room



OPEN PLAN

3RD FLOOR | 12,976 SQ FT

- 123 work stations
- 2 x executive offices
- 2 x private offices
- 2 x kitchenettes
- 2 x print areas
- 1 x 10 person meeting room
- 2 x 8 person meeting room
- 1 x 6 person meeting room



- 4 pipe fan coiled air conditioning system
- Super fast broadband (IGB of connectivity available)
- Perforated steel suspended ceiling with LG7 lighting
- Stunning river views
- Steel encapsulated raised floors

- 6 x 12 person high speed passenger lifts
- Remodelled double height reception with new integrated coffee facility
- Basement car parking
- Shower and changing facilities
- EPC rating B



A SHORT WALK

Liverpool has a wide range of amenities and leisure facilities a short walk from 20 Chapel Street. The impressive array of shops, bars and restaurants cater for all occasions as the lively business district continues to grow.



ON OFFER LIVERPOOL



TRAVEL

- 1. Liverpool Pier Head Ferry Terminal
- 2. Cruise Terminal
- 3. James Street Rail Station
- 4. Moorfield Rail Station



HOTELS

- 5. Atlantic Tower Hotel
- 6. Crowne Plaza Hotel
- 7. Malmaison Hotel
- 8. Travelodge
- 9. Radisson Blu Hotel



RESTAURANTS

- 10. Restaurant Bar & Grill
- 11. Fazenda Rodizio Grill
- 12. Cau
- 13. San Carlo
- 14. Marco Pierre White



BARS & CAFÉS

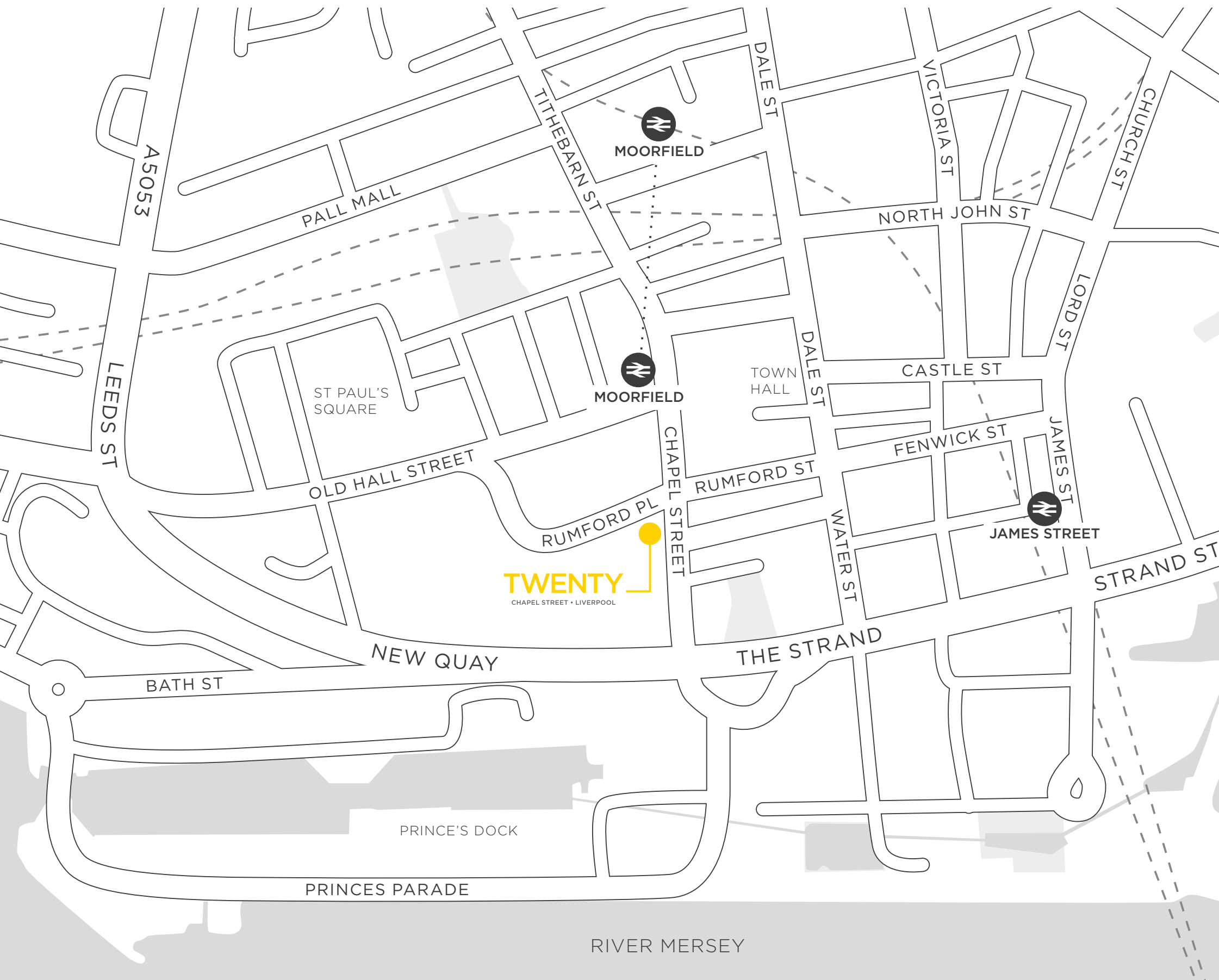
- 15. Costa
- 16. Starbucks
- 17. Pret A Manger
- 18. Philpotts
- 19. The Vincent Café and Cocktail Bar



LEISURE

- 20. Museum of Liverpool
- 21. Debenhams
- 22. JD Gym

TRAVEL TIMES



Chapel Street is an arterial route from The Strand and Pier Head through the Commercial District. It provides direct access to both Queensway and Kingsway Mersey Tunnels and Liverpool Lime Street mainline station.

SAT NAV: L3 9AG

Station	Travel Time
Manchester	35 mins
Chester	45 mins
Southport	45 mins
Leeds	1 hr 45 mins
London Euston	2 hrs

WWW.TWENTYCHAPELSTREET.CO.UK

FURTHER INFORMATION

For further information or to arrange a viewing please contact the sole leasing agents



**WORTHINGTON
OWEN.**

WWW.WORTHINGTONOWEN.COM

Andrew Owen

T 0151 230 1130 **M** 07798 576 789

andrew@worthingtonowen.com

Mark Worthington

T 0151 230 1130 **M** 07713 884 784

mark@worthingtonowen.com